



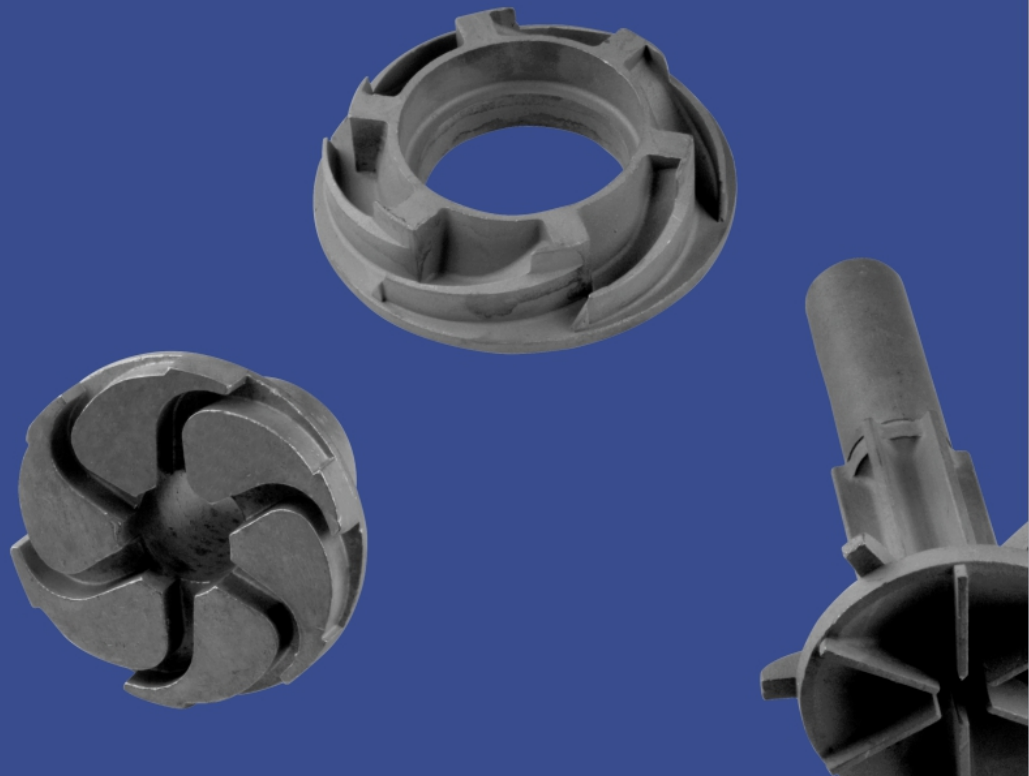
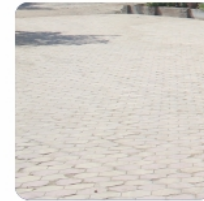
Survey No. 213, Plot No. 3 & 4,
N.H 8-B, Veraval (Shapar),
Rajkot- 360024, Gujarat, India.

Phone : +91-2827-253607
e : info@jagdish.co.in
w : www.jagdish.co.in



Innovation | Experience | Performance

About Us



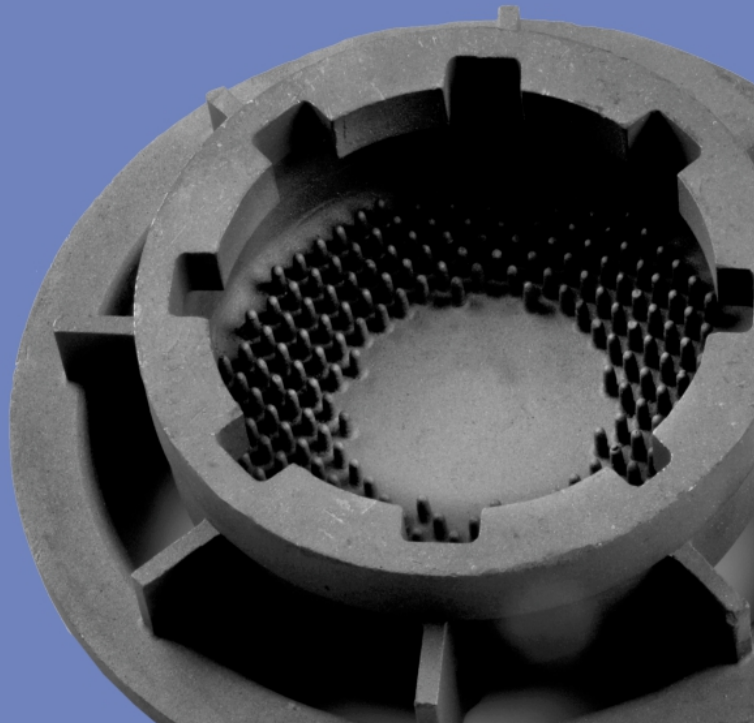
Jagdish Precision Cast established in 2005 as an extension of Jagdish Technocast is a 20 year old company with experience in manufacturing investment casting.

In the field of castings technology, Jagdish is not only one of the foremost names in India but also a highly respected exporter to some of the most important industrial nations in the world. After all, we have been making castings for around twenty years.

Jagdish Precision Cast is equipped with the latest and most sophisticated processing equipments, a state of the art machining facility as well as a full fledged testing capability. Our ISO 9001 Certification ensures high standards of design & process capability.

We can handle all of your casting requirements, from simple to complex parts, medium or high volumes. Our primary goal is to satisfy our customers by delivering the highest quality components on time, all the time, at a competitive cost. Achieving this goal requires expertise, commitment and a comprehensive understanding of the casting process.

The Jagdish Advantage



JAGDISH CASTINGS TECHNOLOGY - PERFORMANCE, EXPERIENCE AND INNOVATION

When it comes to investment and sand castings, we are the industry leader for :

1. Satisfying customers
2. Producing components of the highest quality
3. Delivering products fast
4. Staying in at the fore front of technology.

Our state of the art investment casting manufacturing complex in Rajkot, India is designed to facilitate the efficient flow of castings.

In addition, Jagdish Precision Cast is committed to complete manufacturing capabilities. In other words, in addition to providing world class investment and sand casting services, we also perform additional high quality operations, including machining, heat treatment, assembly, painting, finishing, and packaging all in-house.

We provide services for 3D Scanning of any kind of product.

Materials Handled

COUNTRY										
USA	GERMANY	U.K.	SWEDEN	FRANCE	BELGIUM	ITALY	SPAIN	JAPAN		
STANDARD										
AIS/SAE	W.-nr.	DIN	BS	EN	SS	AFNOR	NBN	UNI	UNF	JIS
1015	1.0401	C15	080M15	-	1350	CC12	-	C15C16	F.111	-
1020	1.0402	C22	050A20	2C	1450	CC20	C25-1	C20C21	F.112	-
1045	1.0503	C55	080M46	-	1650	CC45	C45-1	C45	F.114	-
1015	1.1141	Ck15	080M15	32C	1370	XC12	C16-2	C16	C15K	S15C
1025	1.1158	Ck25	-	-	-	-	C25-2	-	-	S25C
1045	1.1191	Ck45	080M46	-	1672	XC42	C45-2	C45	C45K	S45C
52100	1.3505	100Cr6	534A99	2258	2258	100C6	-	100Cr6	F.131	SUJ2
ASTMA20Gr.A	1.5415	15Mo3	1501-240	-	2912	15D3	16Mo3	16Mo3KW	16Mo3	-
ASTM A350LF5	1.5622	14Ni6	-	-	-	16N6	18Ni6	14Ni6	16Ni6	-
ASTM A353	1.5662	X8Ni9	1501-509,510	-	-	-	10Ni36	X10Ni9	XBNNi09	-
9840	1.6511	36CrNiMo4	816M40	110	-	40NCD3	-	38NiCrMo4(KB)	35NiCrMo4	-
8620	1.6523	21NiCrMo2	805M20	362	2506	20NCD2	-	20NiCrMo2(KB)	20NiCrMo2	SNCM220(H)
4340	1.6582	34CrNiMo6	817M40	24	2541	35NCD6	35CrNiMo6	35NiCrMo6(KB)	-	-
5115	1.7131	16MnCr5	(527M20)	-	2511	16MC5	16MnCr5	16MnCr5	16MnCr5	-
4130	1.7218	25CrMo4	1717CDS110	-	2225	25CD4	25CrMo4	25CrMo4(KB)	AM26CrMo4	SCM420;SCM430
4137; 4135	1.7220	34CrMo4	708A37	19B	2234	35CD4	34CrMo4	35CrMo4	34CrMo4	SCM432;SCRM3
4140; 4142	1.7223	41CrMo4	708M40	19A	2244	42CD4TS	41CrMo4	41CrMo4	42CrMo4	SCM440
4140	1.7225	42CrMo4	708M40	19A	2244	42CD4	42CrMo4	42CrMo4	42CrMo4	SCM440(H)
ASTMA182 F11; F12	1.7335	13CrMo4	1501-620Gr27	-	-	15CD3.5 15CD4.5	14CrMo45	14CRMo45	14CrMo45	-
ASTM A182	1.7380	10CrMo9	1501-622	-	2218	12CD9,10	-	14CrMo9,10	TU.H	-
-	1.8509	41CrAlMo7	905M39	41B	2940	50CAD6,12	41CrAlMo7	41CrAlMo7	41CrAlMo7	-
403	1.4000	X7Cr13	403S17	-	2301	Z6C13	-	X6Cr13	F.3110	SUS403
410	1.4006	X10Cr13	410S21	56A	2302	Z10C14	-	X12Cr13	F.3401	SUS410
430	1.4016	X8Cr17	430S15	60	2320	Z8C17	-	X8Cr17	F.3113	SUS430
431	1.4057	X22CrNi17	420C29	57	2321	Z15CNi6.02	-	X16CrNi6	F.3427	SUS431
430F	1.4104	X12CrMoS17	S20S45	-	2383	Z10CF17	-	X10CrS17	F.3117	SUS430F
304	1.4301	X5CrNi189	304S15	58E	2332	Z6CN18.09	-	X5CrNi1810	F.3551 F.3541 F.3504	SUS304
303	1.4305	X12CrNiS188	303S21	58M	2346	Z10CNF18.09	-	X100CNiS18 09	F.3508	SUS303
304L	1.4306	X2CrNi18 9	304S12 304C12	-	2352 2333	Z2CN18.10 Z3CN19.10	-	X2CrNi18 11	F.35023	SCS19 SUS304L
-	1.4308	G-X6CrNi18 9	304C15	-	-	Z6CN18.10M	-	-	-	SCS13
301	1.4310	X12CrNi17 7	-	-	-	Z12CN17.07	-	X12CrNi17 07	F.3517	SUS301
304LN	1.4311	X2CrNiN18 10	304S62	-	2371	Z2CN18.10	-	-	-	SUS304LN
-	1.4313	X5CrNi13 4	425C11	-	-	Z4CND13.4M	-	-	-	SCS8
316	1.4401	X5CrNiMo18 10	316S16	58J	2347	Z6CND17.11	-	X5CrNiMo17 12	F.3543	SUS316
-	1.4408	G-X6CrNiMo18 10	316C16	-	-	-	-	-	F.8414	SCS14
316LN	1.4429	X2CrNiMoN 18 13	-	-	2375	Z2CND17.13	-	-	-	SUS316LN
316L	1.4435	X2CrNiMo 18 12	316S12	-	2353	Z2CND17.13	-	X2CrNiMo17 13	-	SCS16 SUS316L
317L	1.4438	X2CrNiMo 13 16	317S12	-	2367	Z2CND19.15	-	X2CrNiMo18 16	-	SUS317L
329	1.4460	X8CrNiMo 27 5	-	-	2324	-	-	-	-	SUS329JL SCH11; SCS11
321	1.4541	X10CrNiTi 18 9	3237	321S12	58B	Z6CNT18.10	-	X6CrNiTi18 11	F.3553 F.3523	SUS321
316Ti	1.4571	X10CrNiMoTi 18 10	320S17	320S17	2350	Z6CNDT17.12	-	X6CrNiMoTi 17 12	F.3535	-
-	1.4581	G-X5CrNiMoNb 18 10	318C17	318C17	-	Z4CNDNb18 12M	-	X8CrNiMo18 11	-	SCS22
309	1.4828	X15CrNiSi 20 12	309S24	309S24	-	Z15CNS20.12	-	-	-	SUH446
310S	1.4845	X12CrNi25 21	310S24	310S24	2361	Z12CN25 20	-	X6CrNi25 20	F.331	SUH310
330	1.4864	X12NiCrSi 36 16	-	-	-	Z12CN35.16	-	-	-	SUH330
321	1.4878	X12CrNiTi18 9	321S12 321S20	321S12	-	Z6CNT18.12B	-	X6CrNiTi18 11	F.3523	SU321

as per customers requirement and many more...



Quality

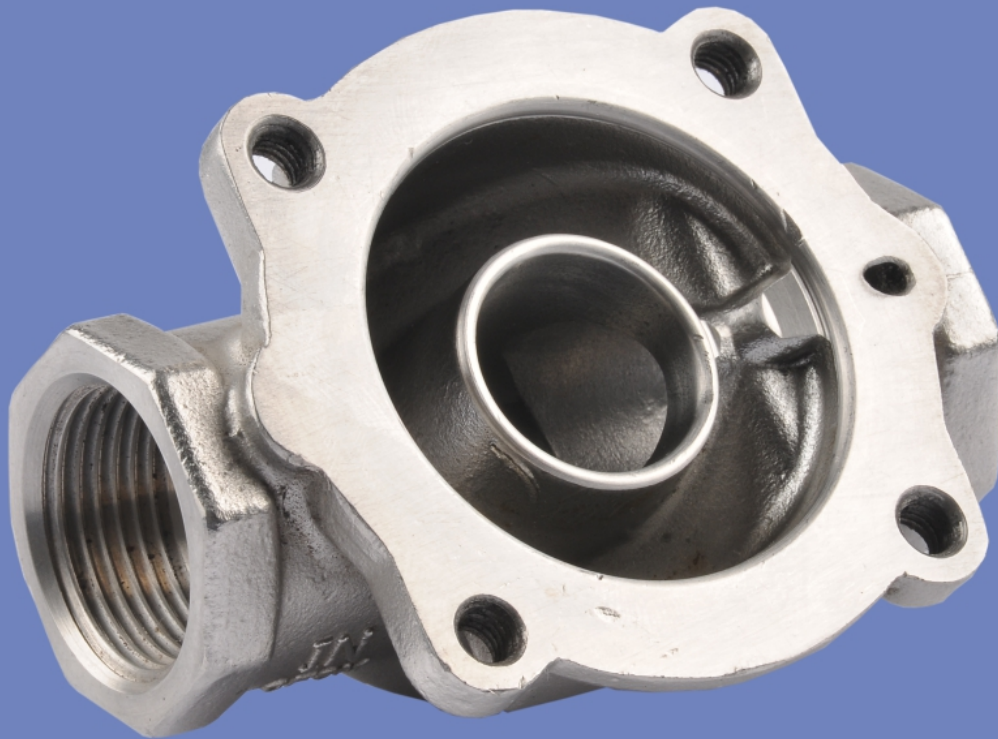
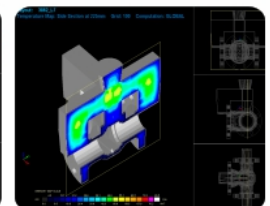
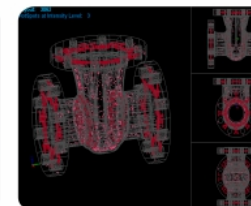
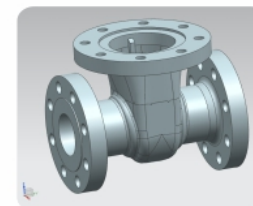
We have all the facilities needed to manufacture finished components, which are the basis for the high added value offered by Jagdish to its customers.

In house spectrometer with 30 channels capable of testing all based materials and also Nitrogen content.

All heats poured are tested on-line on Spectrometer.
All the Scrap is also tested before using.

Well equipped mechanical testing laboratory with machines like Rockwell Hardness Tester, Universal Testing Machine, Bend test Machine, Radioactive Testing, 3D Inspections. Impact Test Machine and metallurgical microscope duly calibrated.

We can also provide tests such as
Dye Penetrate test
Magnetic Particles Test
Ultrasonic Test
Radiography Test
PMI (Positive Material Identification)
Hydro Test
Corrosion Test



Environment



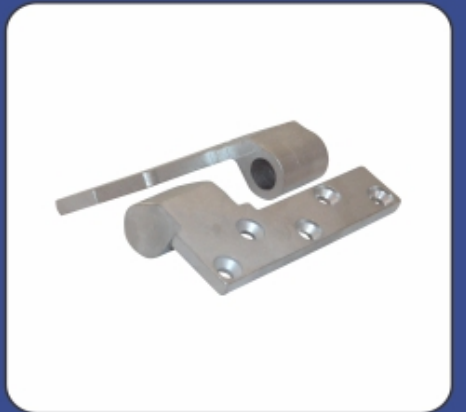
To offset our carbon footprint, we have invested in a windmill that provides us with green & clean energy for all of our production needs. In addition we recycle our materials like wax as well as scrap. Recently, in partnership with the Japanese Government, we have installed energy efficient air conditioners at our plant.



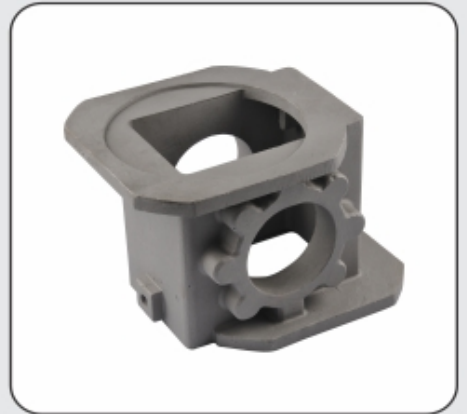
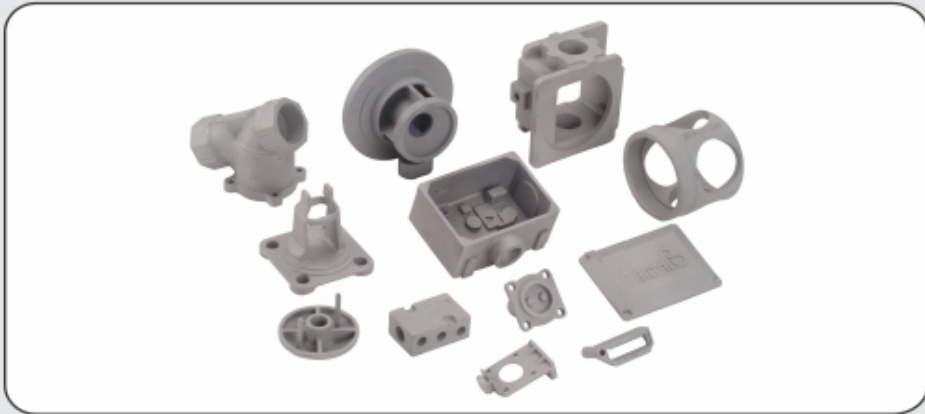
AUTOMOBILE



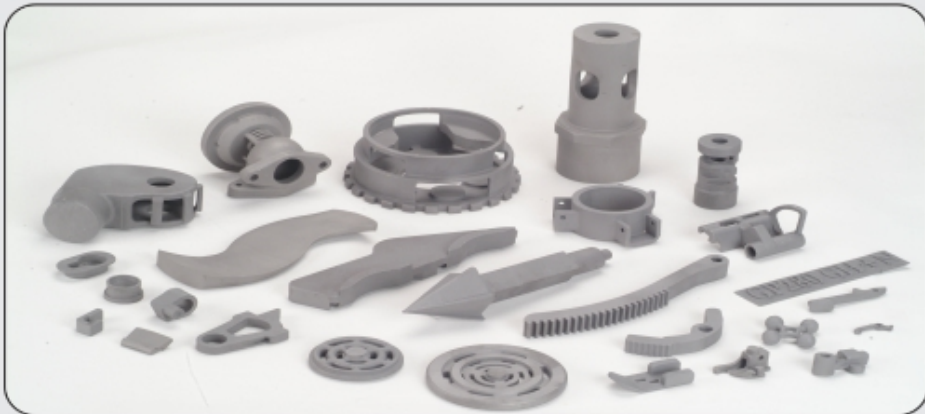
BUILDING HARDWARE



CONTROL VALVES



GENERAL ENGINEERING



MACHINED PARTS



PROCESS INDUSTRIES



RAILWAYS



PUMPS



SAND CASTING

